

How to Apply Heat Transfer Paste

TQSOT Control Boards

APPLICATION OF HEAT-SINK PASTE FOR
GREE ODU CONTROL BOARDS

TQSOT

ODU main board replacement



YOU MUST REPLACE THE HEAT SINK PAST WHEN INSTALLING
THE NEW BOARD

TQSOT

ODU main board replacement



TQSOT

ODU main board replacement



This is what happens if you don't replace the heatsink paste
and properly secure the board to the heatsink!

TQSOT

ODU main board replacement



This is what happens if you don't replace the heatsink paste
and properly secure the board to the heatsink!

TQSOT

ODU main board replacement



This is what happens if you don't replace the heatsink paste
and properly secure the board to the heatsink!

TQSOT

(Continued on back)

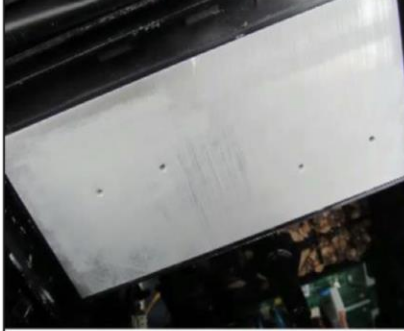
ODU main board replacement



Wipe off
residual
heatsink paste

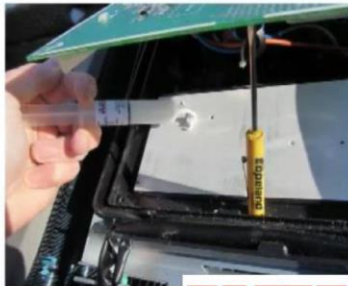
TQSOT

ODU main board replacement



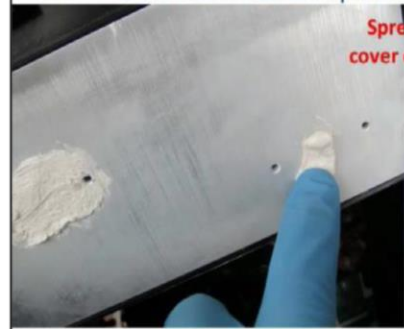
TQSOT

ODU main board replacement



TQSOT

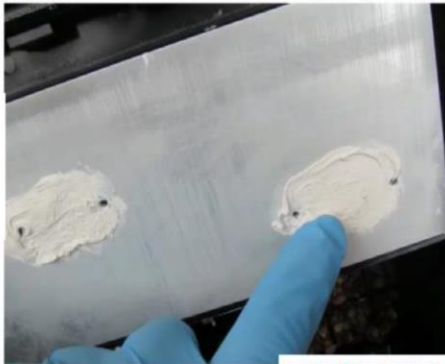
ODU main board replacement



Spread the paste to
cover each contact spot

TQSOT

ODU main board replacement



TQSOT

ODU main board replacement



TQSOT